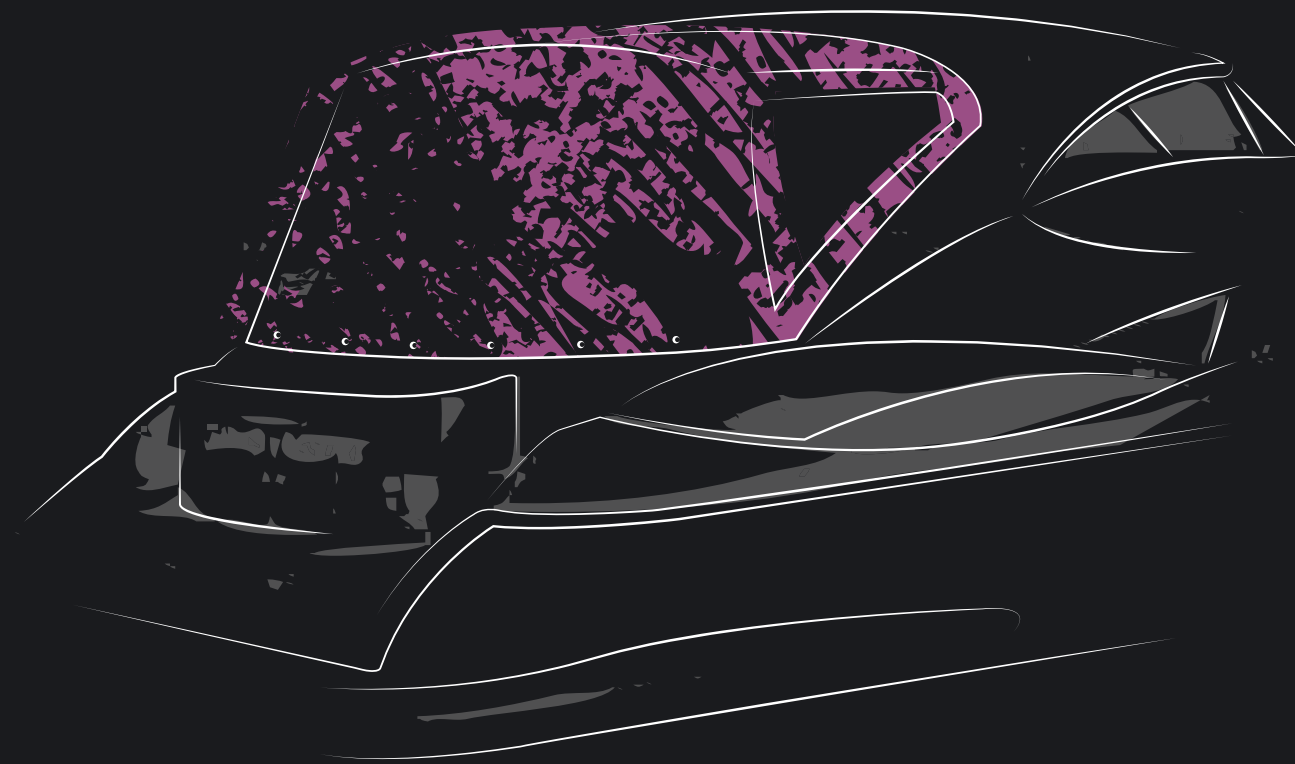


SUNBRELLA PLUS



DESIGN + PERFORMANCE™

SUNBRELLA.COM



Dickson-Constant RCS Lille Métropole 381 347 970 - Edition 10/2017 - Sunbrella® is a registered trademark of Glen Raven, Inc.
*see warranty conditions on www.sunbrella.com - **voir conditions générales de garantie sur www.sunbrella.com

OVERALL CHARACTERISTICS / CARACTÉRISTIQUES GÉNÉRALES

| | |
|------------------------------|---|
| Composition | 100% Sunbrella® acrylic 100% acrylique Sunbrella® |
| Finish Finition | Resin based anti-fungi coating, water and UV resistant Enduction anti-fongique à base de résines, imperméable et résistante aux UV |
| Weave Armure - ISO 7211-1 | Canvas Toile |
| Weight / Poids - ISO 3801 | 320 g/m ² |
| Width / Laize - EN 1773 | 152 cm |

FABRIC STRENGTH / RÉSISTANCE DU TISSU

| | |
|---|---|
| Oil-repellent properties Oléofugation - ISO 14419 | 5/8 |
| Tensile strength Résistance rupture - ISO 13934-1 | Warp 140 daN - Weft 130 daN Chaîne 140 daN - Trame 130 daN |
| Elongation at break Allongement à la rupture - ISO 13934-1 | Warp 30% - Weft 15% Chaîne 30% - Trame 15% |
| Tear strength Résistance déchirure - ISO 13937-1 | Warp 3,3 daN - Weft 2,5 daN Chaîne 3,3 daN - Trame 2,5 daN |
| Schmerber - ISO 811 | 1000 mm |
| Spray test - ISO 4920 | 4-5/5 |
| Air permeability Perméabilité à l'air - ISO 9237 | 2,5 l/m ² /s |

COLOUR RESISTANCE / RÉSISTANCE DES COULEURS

| | |
|---|-------|
| Colour fastness UV Solidité coloris UV - ISO 105 B02 | 7-8/8 |
| Colour fastness weather condition Solidité coloris intempéries - ISO 105 B04 | 4-5/5 |
| Colour fastness dry friction Solidité coloris frottement sec - ISO 105X12 | 5/5 |
| Colour fastness wet friction Solidité coloris frottement humide - ISO 105X12 | 5/5 |

USE / UTILISATION

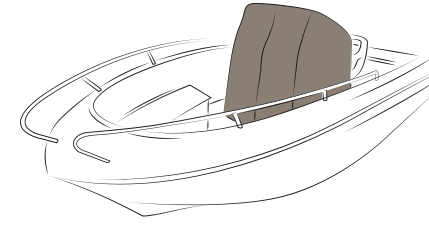
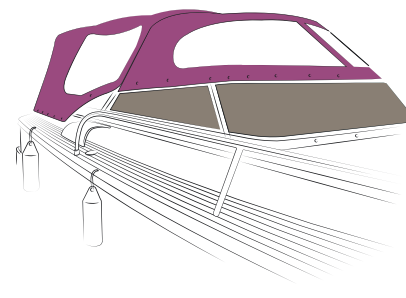
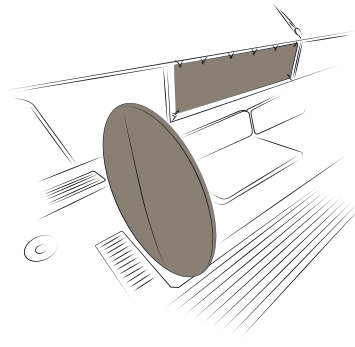
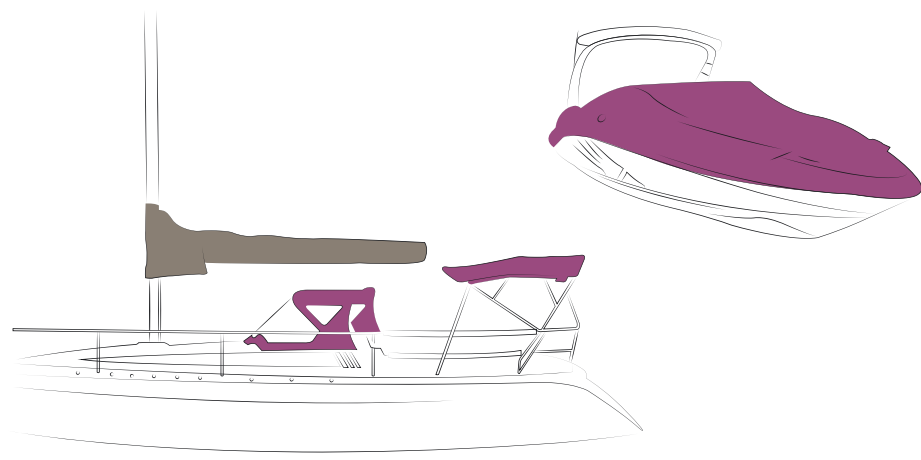
| | |
|--|--|
| Roll length / Longueur de coupe | 50 ml |
| Recommended use Utilisation recommandée | Spray hood, bimini, sun awning, dodgers, camper & cockpit enclosures, console cover, external windshield cover, winter cover, wheel & winch cover, mainsail cover Capote, bimini, taud de soleil, cagnards, fermetures arrières, fermetures de cockpit, housse de console, housse de pare-brise, housse d'hivernage, housse de barre à roue & de winch, housse de grand voile |
| Guarantee / Garantie | 5 years* / 5 ans** |

UPF 40 This pictogram indicates that the fabric filters 97,5% of UVB rays / Ce picto vous indique que la toile filtre 97,5% des rayons UV.

UPF 50+ This pictogram indicates that the fabric filters more than 98% of UVB rays / Ce picto vous indique que la toile filtre plus de 98% des rayons UV.

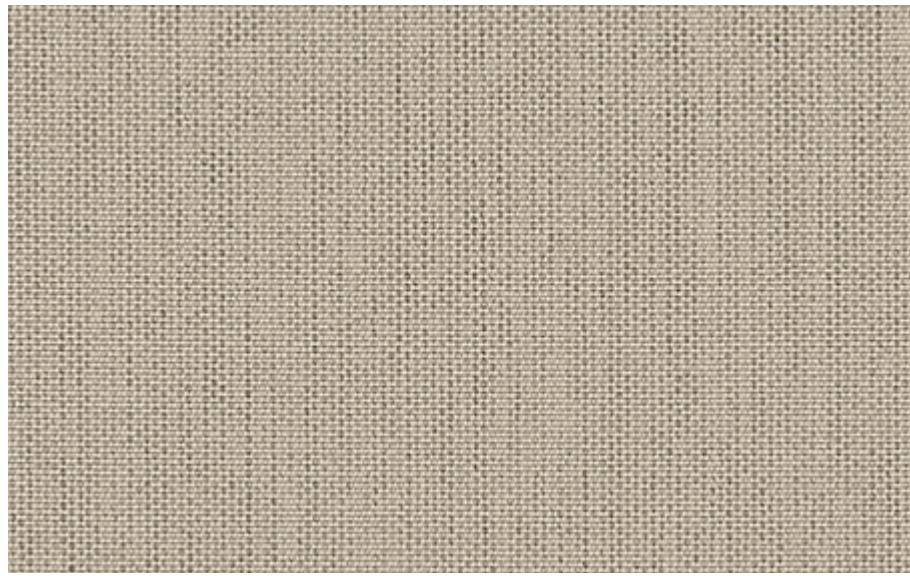


The values of this product may vary depending on a tolerance variation of +/- 5%
Les valeurs de ce produit peuvent varier selon une tolérance de +/- 5%.



● Recommended
Recommandé

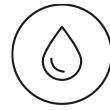
● Possible



Papyrus \geq UPF 50+
SUNTT P055 152



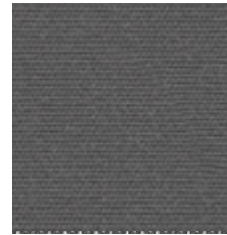
DIMENSIONAL
STABILITY
Stabilité dimensionnelle



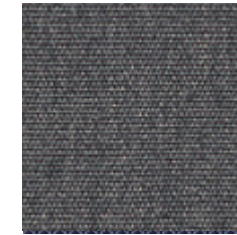
WATER
RESISTANCE
Imperméabilité



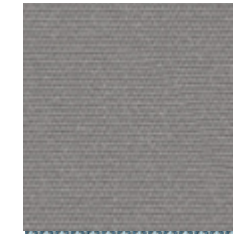
BREATHABLE
COMFORT
Respirant



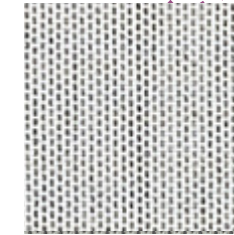
Charcoal Grey \geq UPF 50+
SUNTT 5049 152



Flanelle \geq UPF 50+
SUNTT 5087 152



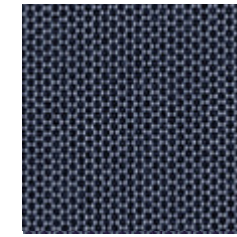
Cadet Grey \geq UPF 50+
SUNTT 5530 152



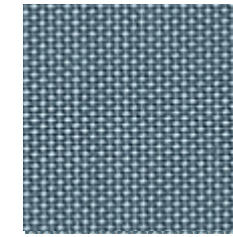
Marble \geq UPF 50+
SUNTT P052 152



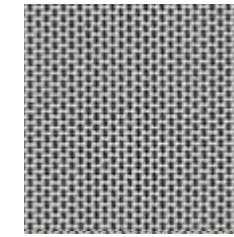
Titanium \geq UPF 50+
SUNTT P054 152



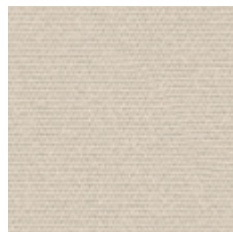
Abyss \geq UPF 50+
SUNTT P058 152



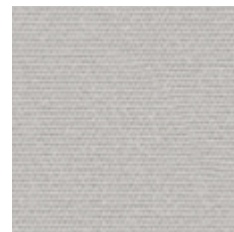
Celestial \geq UPF 50+
SUNTT P057 152



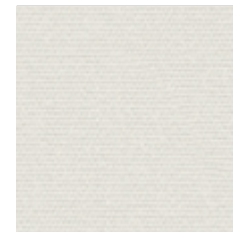
Steel \geq UPF 50+
SUNTT P053 152



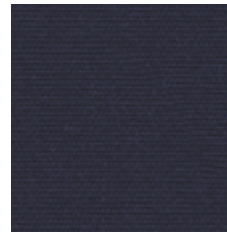
Oyster \geq UPF 50+
SUNTT 5030 152



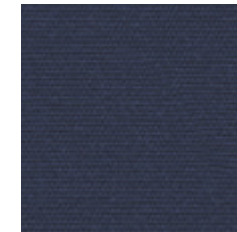
Silver \geq UPF 50+
SUNTT 5035 152



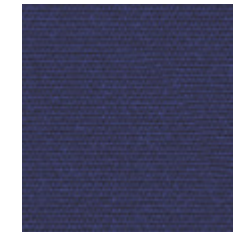
Natural \geq UPF 40
SUNTT 5020 152



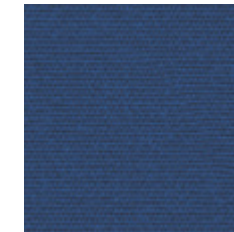
Captain Navy \geq UPF 50+
SUNTT 5057 152



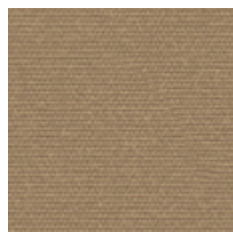
Marine Blue \geq UPF 50+
SUNTT 5031 152



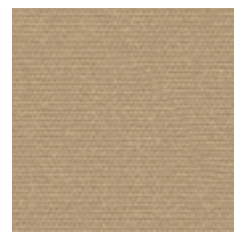
Atlantic Blue \geq UPF 50+
SUNTT P024 152



Arctic Blue \geq UPF 50+
SUNTT P023 152



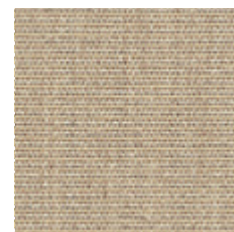
Toast \geq UPF 50+
SUNTT 5528 152



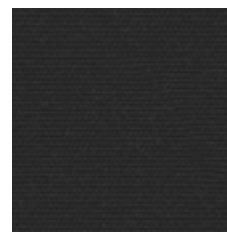
Dune \geq UPF 50+
SUNTT 5026 152



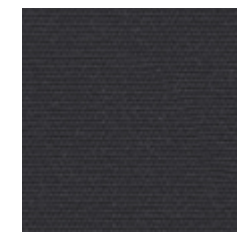
Beige Chiné \geq UPF 50+
SUNTT 5089 152



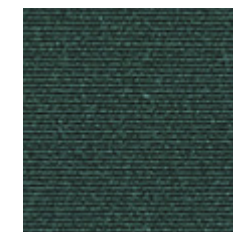
Flax \geq UPF 50+
SUNTT P017 152



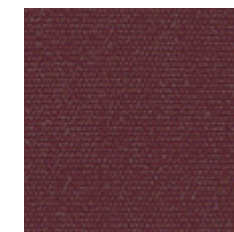
Jet Black \geq UPF 50+
SUNTT 5032 152



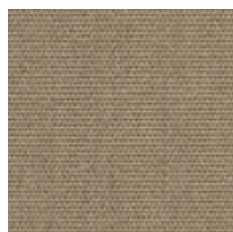
Dark Navy \geq UPF 50+
SUNTT 5058 152



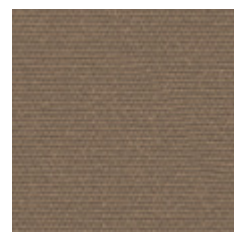
Forest Green \geq UPF 50+
SUNTT 5040 152



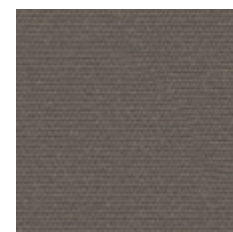
Burgundy \geq UPF 50+
SUNTT 5034 152



Heather Beige \geq UPF 50+
SUNTT 5572 152



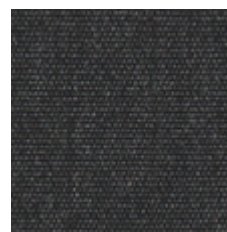
Hemp Beige \geq UPF 50+
SUNTT 5048 152



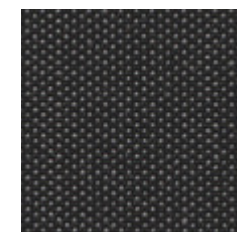
Taupe \geq UPF 50+
SUNTT 5548 152



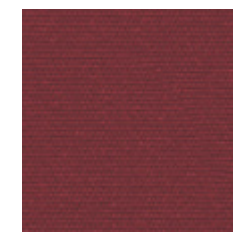
Dark Smoke \geq UPF 50+
SUNTT 5085 152



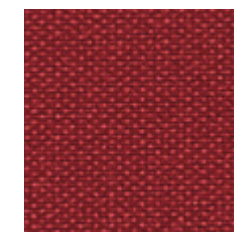
Graphite \geq UPF 50+
SUNTT 5082 152



Charcoal Piqué \geq UPF 50+
SUNTT 5088 152



Crimson Red \geq UPF 50+
SUNTT P015 152



Pepper \geq UPF 50+
SUNTT P056 152